

Swivl for the Hybrid Classroom

In **Hybrid Learning**, some students are physically in class while others attend remotely through a live streaming application such as **Zoom**, **Microsoft Teams**, or **Google Meet**. Maintain authenticity and promote engagement via Swivl's remote **360° tracking** and **superb audio collection** aided by multiple microphones. Learn about the audio options Swivl offers for all participants on the back side of this flyer.



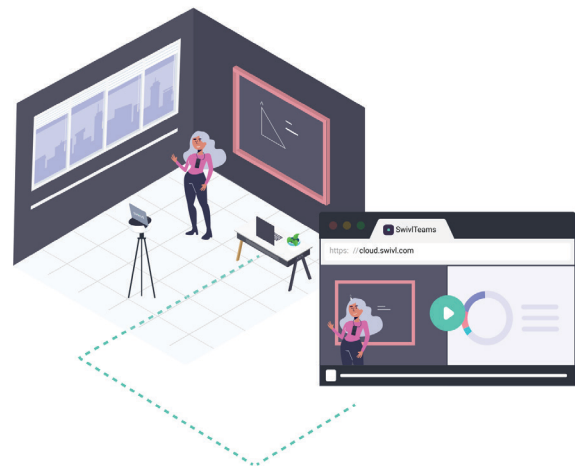
Fully synchronous Swivl session



Student view of synchronous Swivl session



Record from any device, anywhere



Screencast with Swivl in your classroom

Fully **synchronous learning** is achievable with Swivl. Students at home will see and hear their peers when you connect Swivl with a live streaming application. Additionally, content on your smart display is shared with remote participants. The result is every student experiences the same lesson at the same time.

This synchronous approach may not be equitable for every student or appropriate in every situation, so plan to build on-demand **asynchronous** video content using **Swivl's Screencasting** or **Web Recording** as well. Upload recorded videos to our FERPA compliant platform where you can **edit, annotate, share a weblink, embed** your videos to an LMS, and get **feedback** from coaches and colleagues,

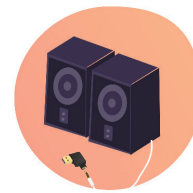
Swivl for the Hybrid Classroom



Standalone Configuration

Connect **standard speakers or earbuds with a microphone** to the Swivl robot for flexible audio in class or on the go. Remote students hear the teacher and in-class participants via Swivl's microphones and will never miss a moment on camera from Swivl's superb 360° tracking.

*Compatible with [Zoom](#) and [Microsoft Teams](#)



Standard speakers
(with digital adapter)

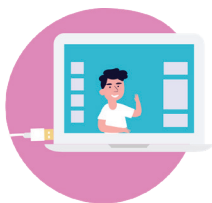


OR Earbuds with microphone

Integrated Configuration

Connect to your classroom audio system via **Smartboard or PC** via **USB cable** or **wirelessly via Swivl Link**. Remote students see and hear the teacher and in-class participants from Swivl's microphones and 360° tracking and view screen-shared content from your PC/Smartboard.

*Compatible with [Zoom](#), [Microsoft Teams](#), [Google Meet](#), and many others



Wired via USB-A to
USB-A cable



OR Wireless via Swivl Link

*iOS devices are preferred in all three hybrid audio configurations, with the exception of Google Meet where Integrated Configuration is **required**. Compatibility with Android devices varies. Please contact support@swivl.com to confirm whether your device is supported.